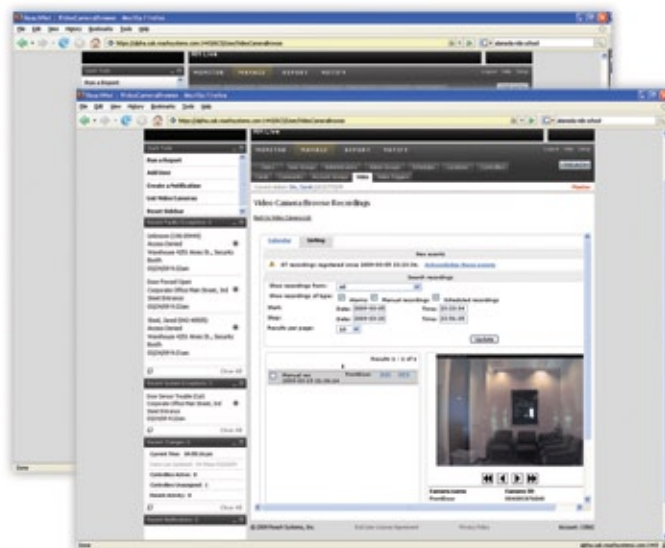




## REACH SYSTEMS

### Key Features

- » No local DVR required
- » Supports Axis Communications' network cameras including PTZ Zoom models
- » Plug-and-play installation on any IP network
- » Easily provision and manage cameras using the ReachNet web-based software platform
- » Fully integrated with the Reach Access Control System
- » Trigger a video recording from any access control event or motion detected by the camera
- » Live view of any camera, plus automatic video recording and archiving
- » Video clips delivered via reports, email notifications, and real-time event monitoring

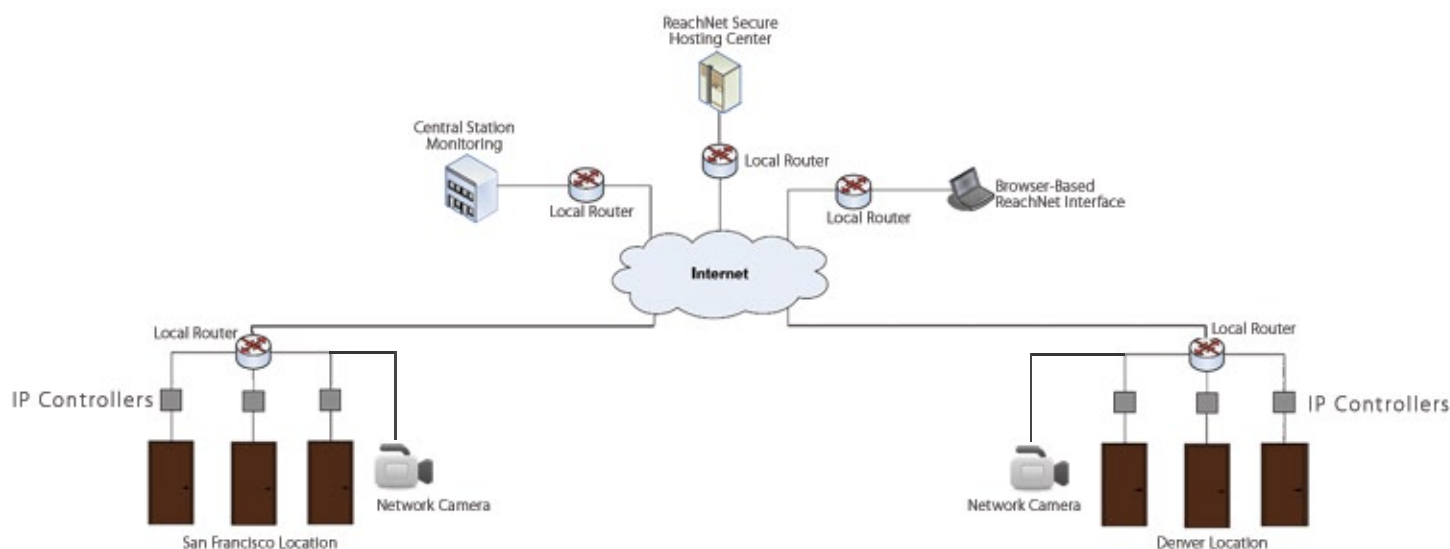


Reach's Managed Services Partners can now offer an integrated access control and video monitoring solution managed through the ReachNet web-based software platform. End Users benefit from being able to deploy an integrated access control and video surveillance solution without having to invest in any new IT infrastructure, DVRs, or software, significantly reducing the cost of installation and deployment. As with the access control data, all video clips are encrypted, archived, and stored at Reach's secure data center as part of its complete hosted security service.

You have full control over which access or motion events trigger a video recording, along with the recording size per clip. This way you can see what happened immediately before and after a specific event. Since you decide which video clips are important to retain, network bandwidth can be preserved for other vital business functions.

Central station operators, security integrators, and end users can perform video surveillance and remote monitoring by viewing video across multiple accounts simply by logging into ReachNet. You can pull up a live view of any camera and use the snapshot, record, stop, pause, and play functionality. To view stored video corresponding to any access control event, simply click on the video link on any monitoring screen, within a report, or in an email notification. You can even download video clips from the server and save them to your desktop.

## System Architecture



## Hosted Services Configurations

| Feature                         | Enterprise         | Corporate          | Small Business     | Live View Only     |
|---------------------------------|--------------------|--------------------|--------------------|--------------------|
| Live View Resolution            | 640 x 480 (pixels) | 640 x 480 (pixels) | 640 x 480 (pixels) | 640 x 480 (pixels) |
| Live View Frame Rate            | 5 frames/second    | 4 frames/second    | 3 frames/second    | 3 frames/second    |
| Alarm Recording Resolution      | 640 x 480 (pixels) | 640 x 480 (pixels) | 320 x 240 (pixels) |                    |
| Alarm Recording Frame Rate      | 5 frames/second    | 3 frames/second    | 3 frames/second    |                    |
| Alarm Recording Time per Clip   | 20 seconds         | 20 seconds         | 20 seconds         |                    |
| Event Storage Time              | 30 days            | 20 days            | 10 days            |                    |
| Continuous Recording Resolution | 320 x 240 (pixels) | 320 x 240 (pixels) | 320 x 240 (pixels) |                    |
| Continuous Recording Frame Rate | 1 Frame/second     | 1 Frame/second     | 1 Frame/second     |                    |
| Manual Recording Resolution     | 640 x 480 (pixels) | 640 x 480 (pixels) | 320 x 240 (pixels) |                    |
| Manual Recording Frame Rate     | 5 frames/second    | 3 frames/second    | 3 frames/second    |                    |
| Manual Recording Time per Clip  | 20 seconds         | 20 seconds         | 20 seconds         |                    |
| Email Notifications             | yes                | yes                | yes                | no                 |

## Supported Axis Network Cameras\*

### Fixed Cameras

AXIS 206  
 AXIS 207  
 AXIS 207MW  
 AXIS 207W  
 AXIS 210  
 AXIS 210A  
 AXIS 211  
 AXIS 211A  
 AXIS 211M  
 AXIS 211W  
 AXIS 221  
 AXIS 223M  
 AXIS M1011  
 AXIS M1011-W  
 AXIS M1031-W  
 AXIS P1311  
 AXIS Q1755

### Fixed Dome Cameras

AXIS 209FD  
 AXIS 209FD-R  
 AXIS 209MFD  
 AXIS 209MFD-R  
 AXIS 216FD  
 AXIS 216FD-V  
 AXIS 216MFD  
 AXIS 216MFD-V  
 AXIS 225FD  
 AXIS M3011  
 AXIS P3301  
 AXIS P3301-V

### PTZ Cameras

AXIS 212 PTZ  
 AXIS 212 PTZ-V  
 AXIS 213 PTZ  
 AXIS 214 PTZ  
 AXIS 215 PTZ  
 AXIS 215 PTZ-E

### PTZ Dome Cameras

AXIS 231D+  
 AXIS 232D+  
 AXIS 233D



1330 Broadway, Suite 1201, Oakland, CA, 94612  
 P 510.452.9532 | F 510.452.9292  
 sales@reachsystems.com | www.reachsystems.com

\* Camera models and options may change, so always check with Reach Sales Support before ordering.